

LAMPIRAN

Tabel 6. Hasil uji kepekaan antibiotik terhadap isolat bakteri aerob pada Infeksi Luka Operasi pasien ruang Rawat Inap bagian Bedah RSUD. Abdul Moeloek.

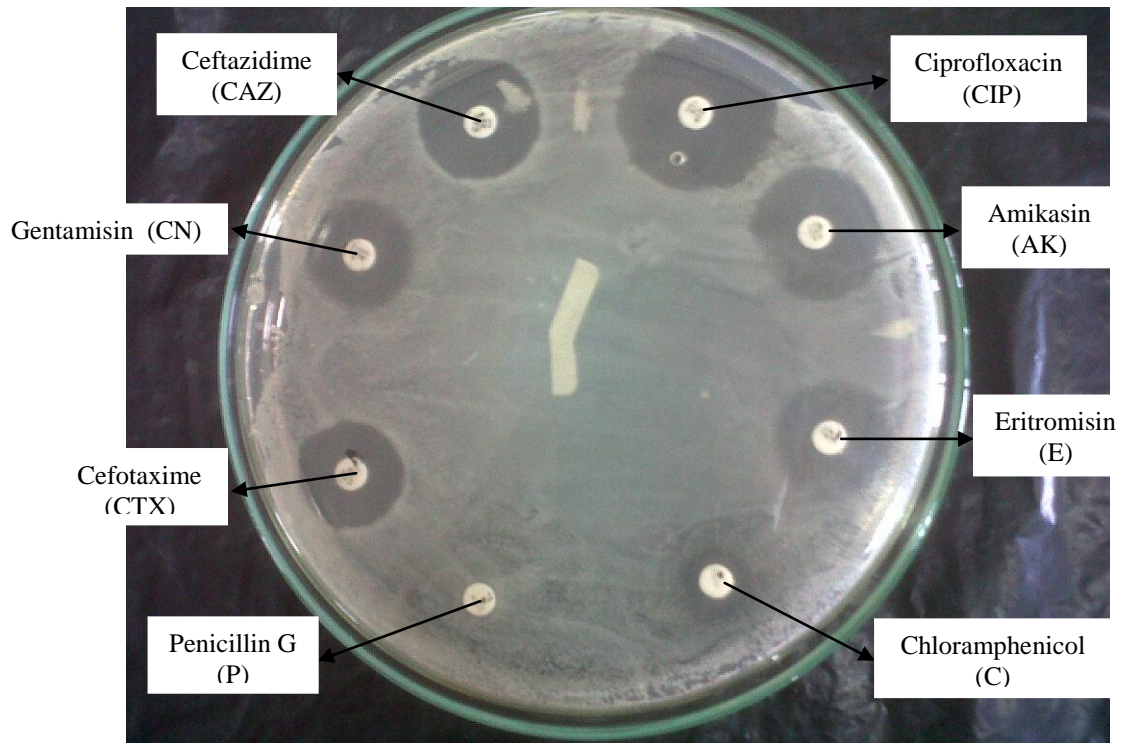
Kode	Bakteri	Hasil Uji Resistensi							
		P	CIP	CAZ	CTX	E	GN	AMK	C
01	<i>Staphylococcus sp.</i>	R	S	S	I	S	S	S	R
	<i>Proteus sp.</i>	R	I	S	I	R	S	S	R
02	<i>Proteus sp.</i>	R	R	I	R	R	R	S	R
03	<i>Pseudomonas sp.</i>	R	R	R	R	R	S	S	R
04	<i>Staphylococcus sp.</i>	R	S	R	R	I	S	S	I
	<i>Pseudomonas sp.</i>	R	R	S	R	R	R	R	R
05	<i>Pseudomonas sp.</i>	R	S	S	S	S	S	R	I
06	<i>Staphylococcus sp.</i>	R	R	R	R	R	R	S	S
	<i>Pseudomonas sp.</i>	R	R	S	S	R	R	S	S
07	<i>Klebsiella sp.</i>	R	I	R	R	R	R	S	R
08	<i>Alkaligenes sp.</i>	R	R	R	R	S	R	R	S
09	<i>Escherichia coli.</i>	R	S	S	S	R	S	S	I
10	<i>Enterobacter sp.</i>	R	R	R	R	S	R	S	S
11	<i>Escherichia coli.</i>	R	R	S	R	R	S	S	R
12	<i>Staphylococcus sp.</i>	R	I	I	S	S	R	S	S
	<i>Klebsiella sp.</i>	R	R	R	R	I	R	S	S
13	<i>Klebsiella sp.</i>	R	R	S	I	R	S	S	R
14	<i>Staphylococcus sp.</i>	R	S	R	R	S	S	S	R
	<i>Proteus sp.</i>	R	R	S	S	R	R	R	S
15	<i>Staphylococcus sp.</i>	I	S	R	R	R	S	S	R
	<i>Enterobacter sp.</i>	R	S	S	I	R	S	S	R
16	<i>Klebsiella sp.</i>	R	R	S	R	R	R	S	S
17	<i>Pseudomonas sp.</i>	R	R	R	R	R	S	S	R
18	<i>Pseudomonas sp.</i>	R	S	S	I	R	R	I	I
19	<i>Staphylococcus sp.</i>	R	R	R	R	S	R	S	R
	<i>Klebsiella sp.</i>	R	I	I	R	R	R	S	R
20	<i>Staphylococcus sp.</i>	S	R	R	S	S	S	S	R
	<i>Klebsiella sp.</i>	R	R	I	R	R	S	S	R
21	<i>Staphylococcus sp.</i>	R	R	R	I	S	S	S	S
22	<i>Pseudomonas sp.</i>	R	I	S	R	R	S	S	R
23	<i>Staphylococcus sp.</i>	R	S	R	I	S	S	S	I
	<i>Pseudomonas sp.</i>	R	S	S	R	R	S	S	I
24	<i>Staphylococcus sp.</i>	R	S	R	R	R	R	R	I
	<i>Pseudomonas sp.</i>	R	R	R	R	R	R	R	R
25	<i>Staphylococcus sp.</i>	R	S	S	I	R	S	S	R
26	<i>Pseudomonas sp.</i>	R	S	R	S	R	S	S	I
27	<i>Escherichia coli.</i>	R	S	S	S	R	S	S	S
28	<i>Pseudomonas sp.</i>	R	S	S	R	R	R	R	I
29	<i>Pseudomonas sp.</i>	R	S	S	R	R	R	R	I
30	<i>Staphylococcus sp.</i>	S	S	R	R	S	S	S	S
	<i>Proteus sp.</i>	R	S	S	R	R	R	R	I

Tabel 11. Hasil uji kepekaan antibiotik terhadap isolat bakteri aerob pada Infeksi Luka Operasi pasien ruang Rawat Inap bagian Kebidanan RSUD. Abdul Moeloek.

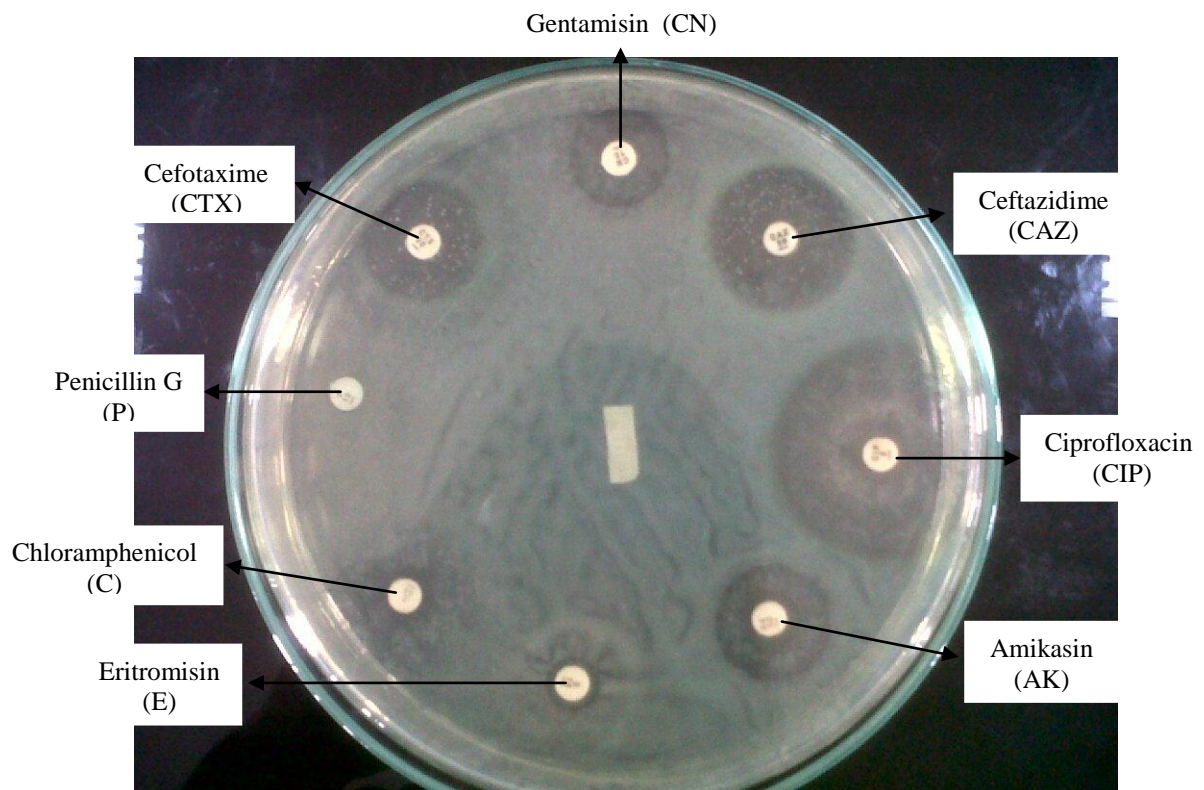
Kode	Bakteri	Hasil Uji Resistensi							
		P	CIP	CAZ	CTX	E	GN	AMK	C
01	<i>Staphylococcus sp.</i>	R	S	I	I	S	S	S	R
	<i>Pseudomonas sp.</i>	R	R	R	I	R	R	S	R
02	<i>Klebsiella sp.</i>	R	R	S	R	R	R	S	S
03	<i>Escherichia coli.</i>	R	S	I	R	R	S	R	R
04	<i>Escherichia coli.</i>	R	R	R	R	S	S	S	R
05	<i>Proteus sp.</i>	R	S	I	R	R	R	S	R
06	<i>Staphylococcus sp.</i>	R	S	S	S	S	S	S	I
07	<i>Alkaligenes sp.</i>	R	S	S	S	R	S	S	S
08	<i>Pseudomonas sp.</i>	R	R	R	R	R	I	S	R
09	<i>Pseudomonas sp.</i>	R	S	S	I	R	S	S	R
10	<i>Klebsiella sp.</i>	R	R	R	R	I	R	S	R
11	<i>Staphylococcus sp.</i>	R	S	S	S	S	R	S	S
	<i>Escherichia coli.</i>	R	R	I	R	R	S	S	S
12	<i>Staphylococcus sp.</i>	R	R	R	R	R	R	R	S
	<i>Klebsiella sp.</i>	R	I	S	S	R	R	S	S
13	<i>Enterobacter sp.</i>	R	S	S	S	R	S	S	S
14	<i>Pseudomonas sp.</i>	R	S	S	I	R	S	S	R
15	<i>Staphylococcus sp.</i>	R	R	R	R	S	R	R	R
16	<i>Escherichia coli.</i>	R	R	R	R	I	R	S	R
17	<i>Staphylococcus sp.</i>	I	I	I	I	R	S	S	R
18	<i>Klebsiella sp.</i>	R	S	S	S	R	S	S	R
19	<i>Staphylococcus sp.</i>	R	S	I	S	S	S	S	R
	<i>Klebsiella sp.</i>	R	I	S	S	R	S	S	I
20	<i>Providencia sp.</i>	R	S	S	I	S	S	R	R
21	<i>Escherichia coli.</i>	R	R	I	R	R	S	S	S
22	<i>Pseudomonas sp.</i>	R	R	R	R	S	S	S	R
23	<i>Enterobacter sp.</i>	R	S	S	I	R	R	R	R
24	<i>Escherichia coli.</i>	R	R	S	S	R	S	S	R
25	<i>Staphylococcus sp.</i>	R	S	R	S	S	S	S	I
	<i>Pseudomonas sp.</i>	R	S	S	S	R	S	S	I
26	<i>Pseudomonas sp.</i>	R	S	S	I	R	R	I	I
27	<i>Klebsiella sp.</i>	R	I	I	I	R	S	S	S
28	<i>Pseudomonas sp.</i>	R	I	S	R	R	R	R	I
29	<i>Pseudomonas sp.</i>	R	R	S	R	R	R	R	I
30	<i>Staphylococcus sp.</i>	R	S	I	S	S	S	S	R
	<i>Escherichia coli.</i>	R	S	I	I	R	R	S	R

Keterangan : P (Penisilin), CIP (Ciprofloxacin), CAZ (Seftazidim), CTX (Sefotaksim), E (Erythromycin), C (Chloramphenicol), GN (Gentamisin), AMK (Amikasin).

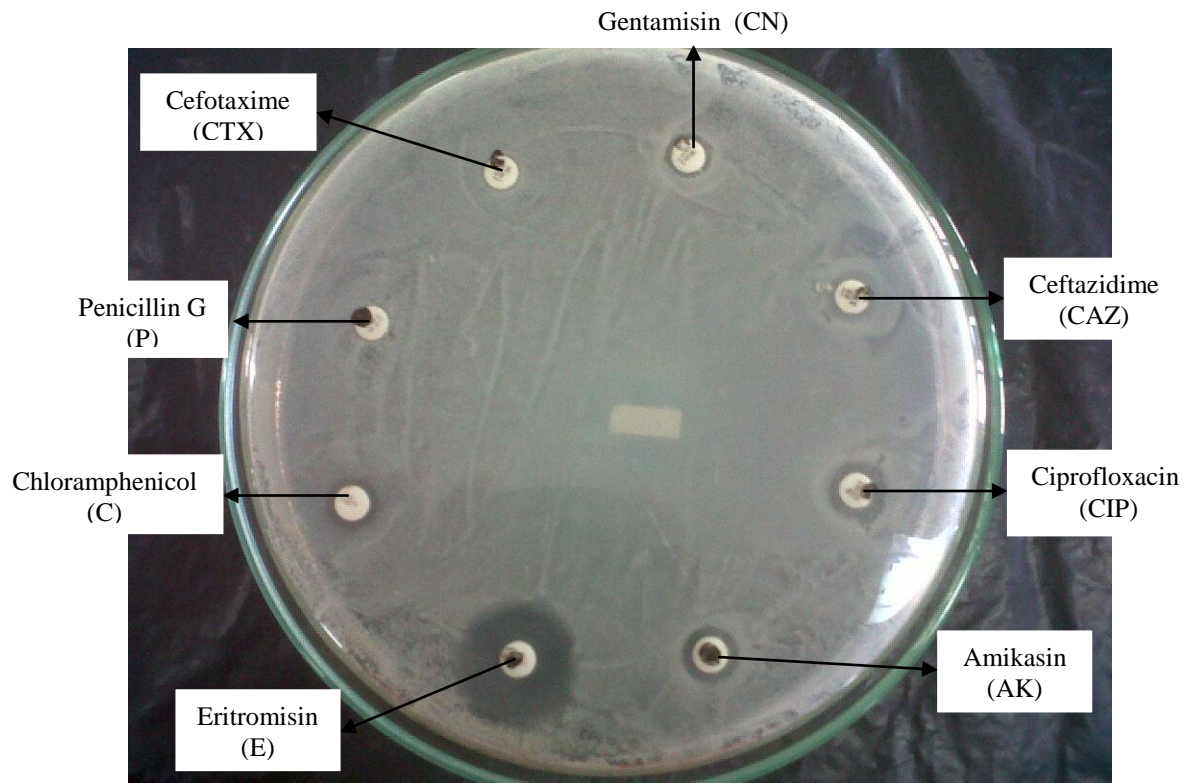
Gambar Hasil Uji Resistensi



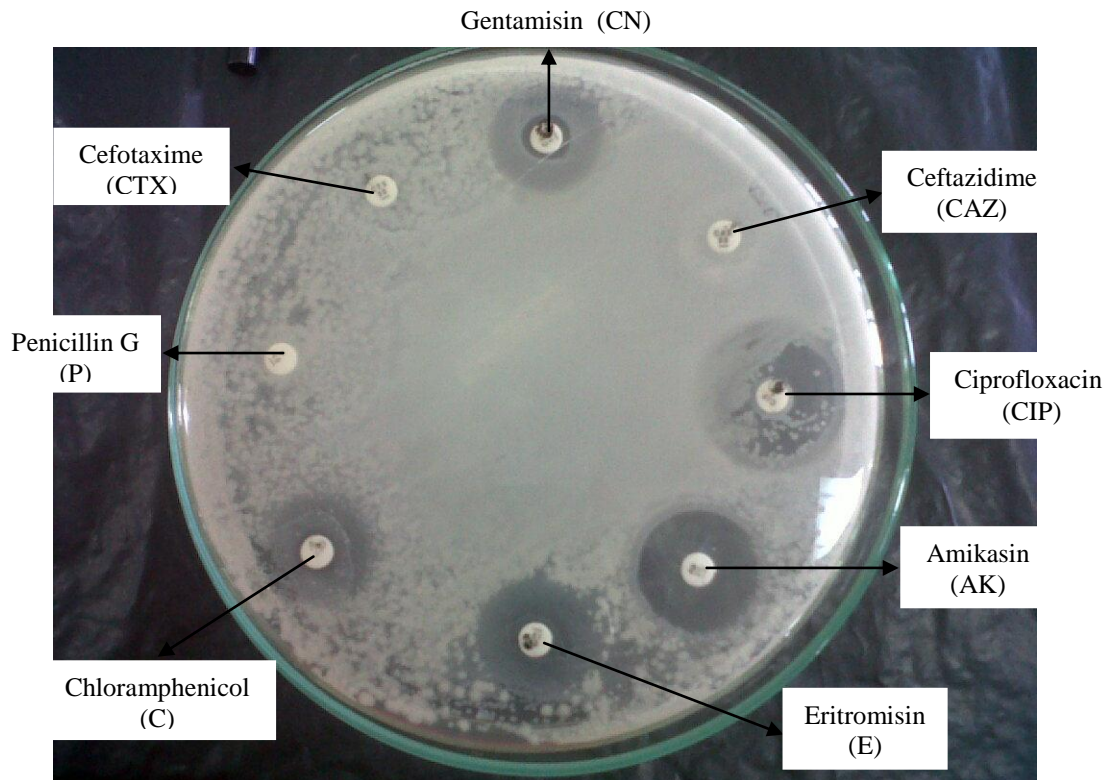
Gambar 36. Hasil Uji Resistensi isolat *Staphylococcus epidermidis* (B1)



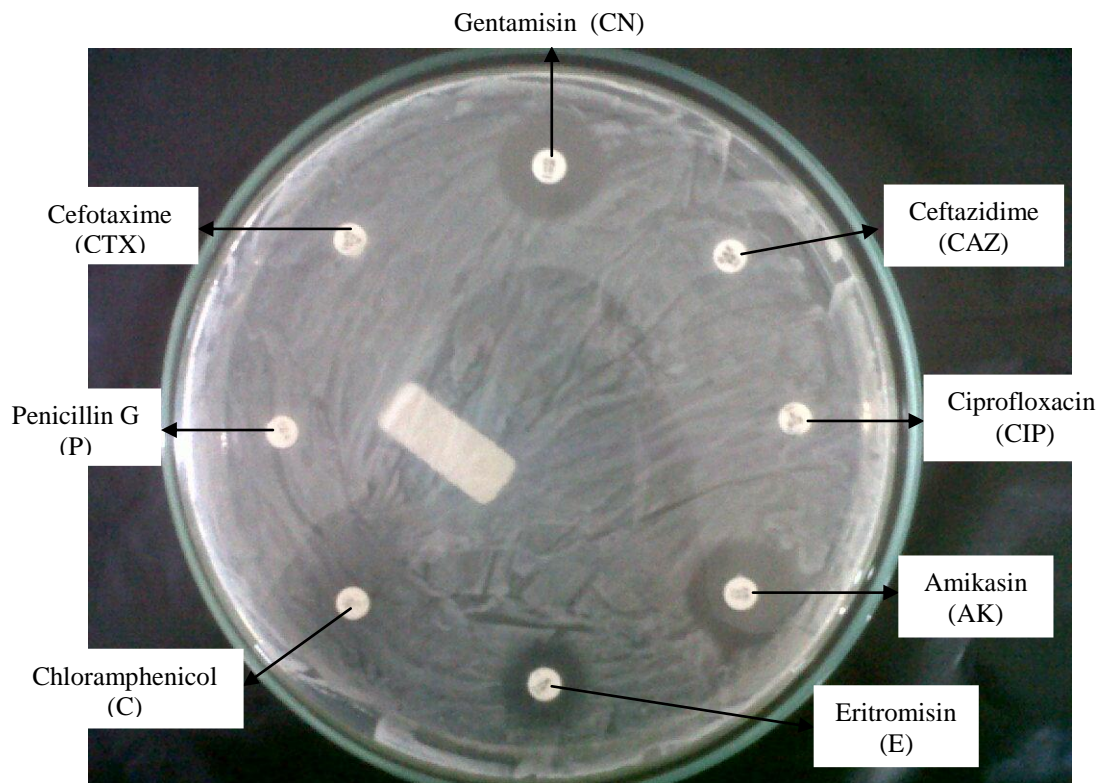
Gambar 37. Hasil Uji Resistensi isolat *Staphylococcus saprophyticus* (B25)



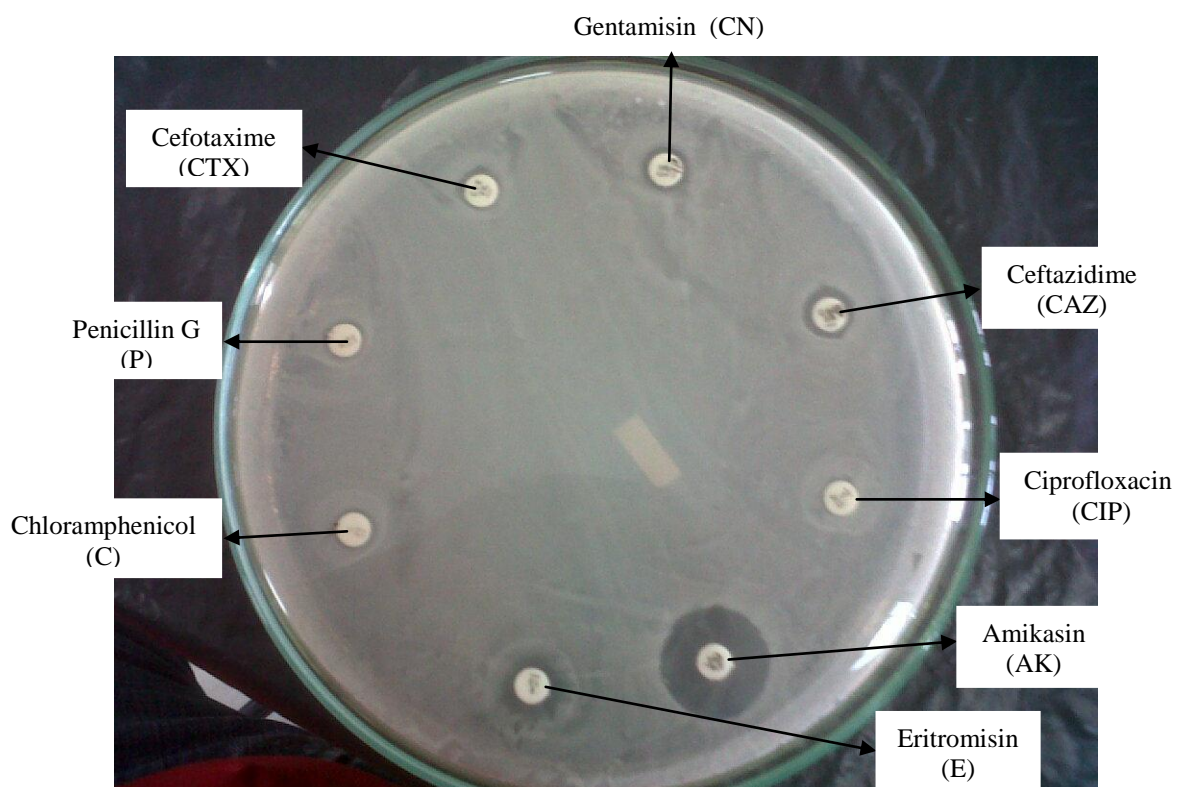
Gambar 38. Hasil Uji Resistensi isolat *Staphylococcus aureus* (K15)



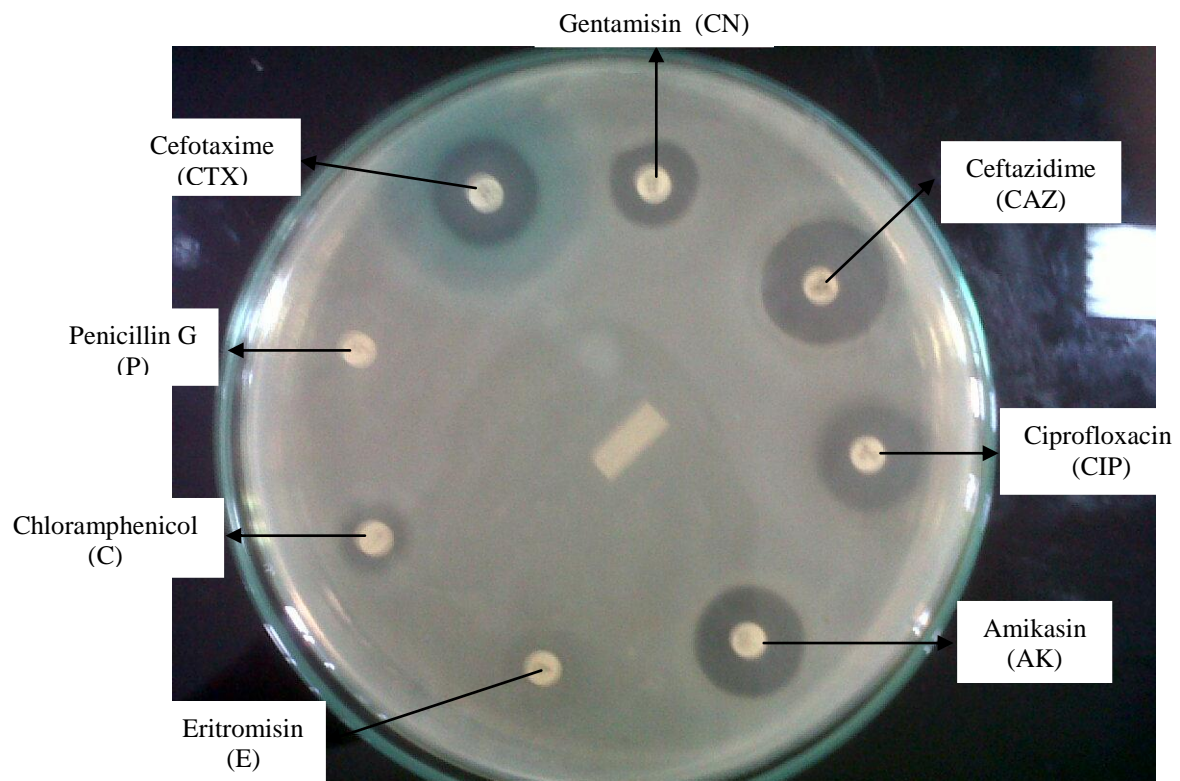
Gambar 39. Hasil Uji Resistensi isolat *Enterobacter* sp. (B10)



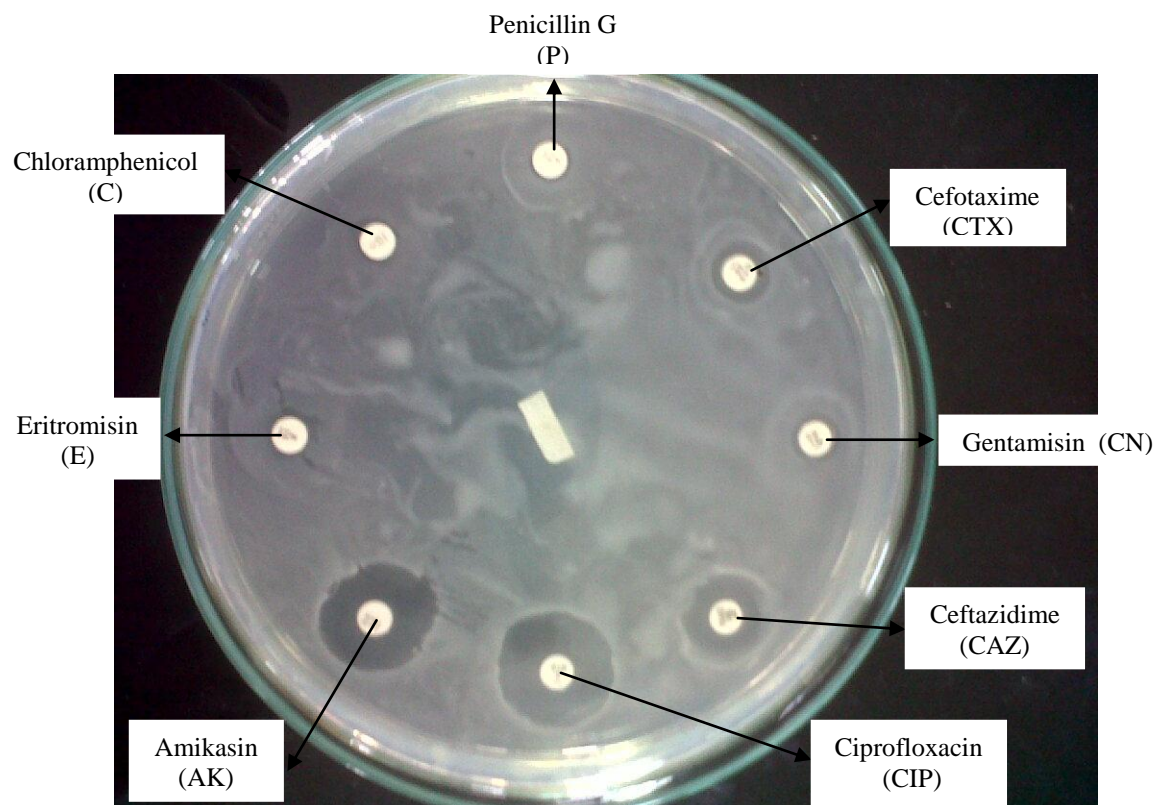
Gambar 40. Hasil Uji Resistensi isolat *Escherichia coli* (K4)



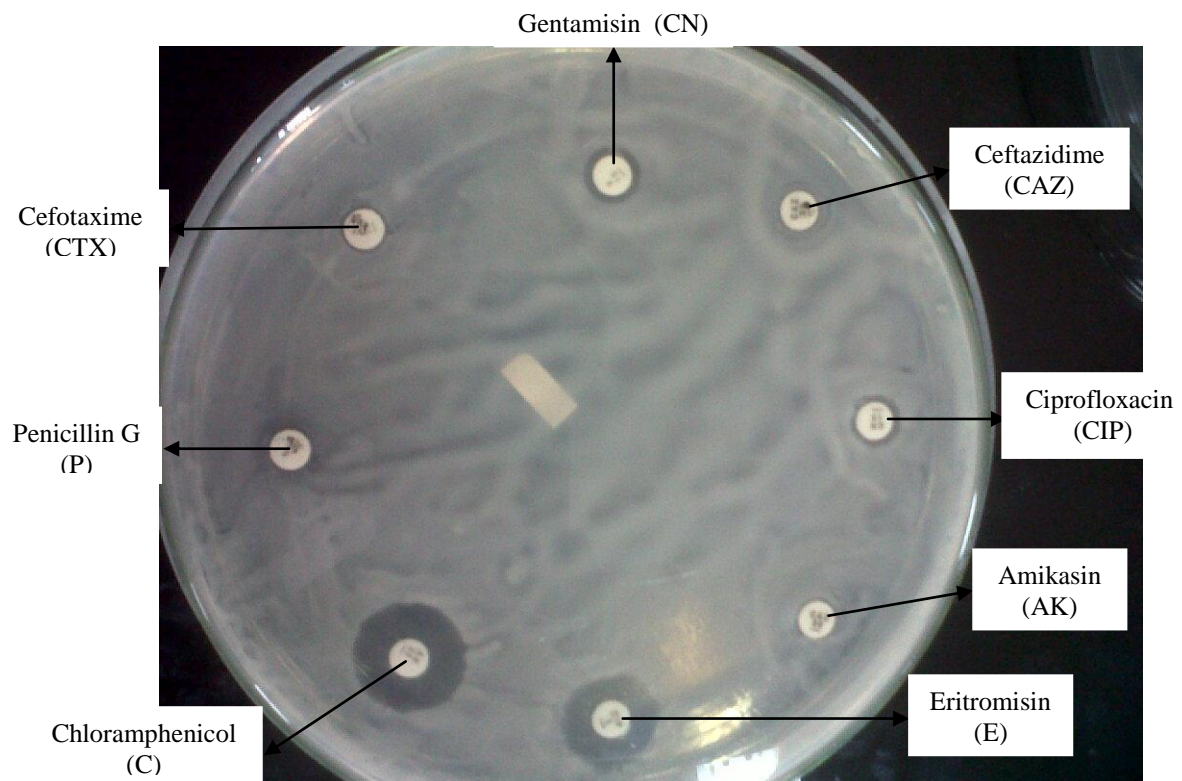
Gambar 41. Hasil Uji Resistensi isolat *Klebsiella sp.* (K10)



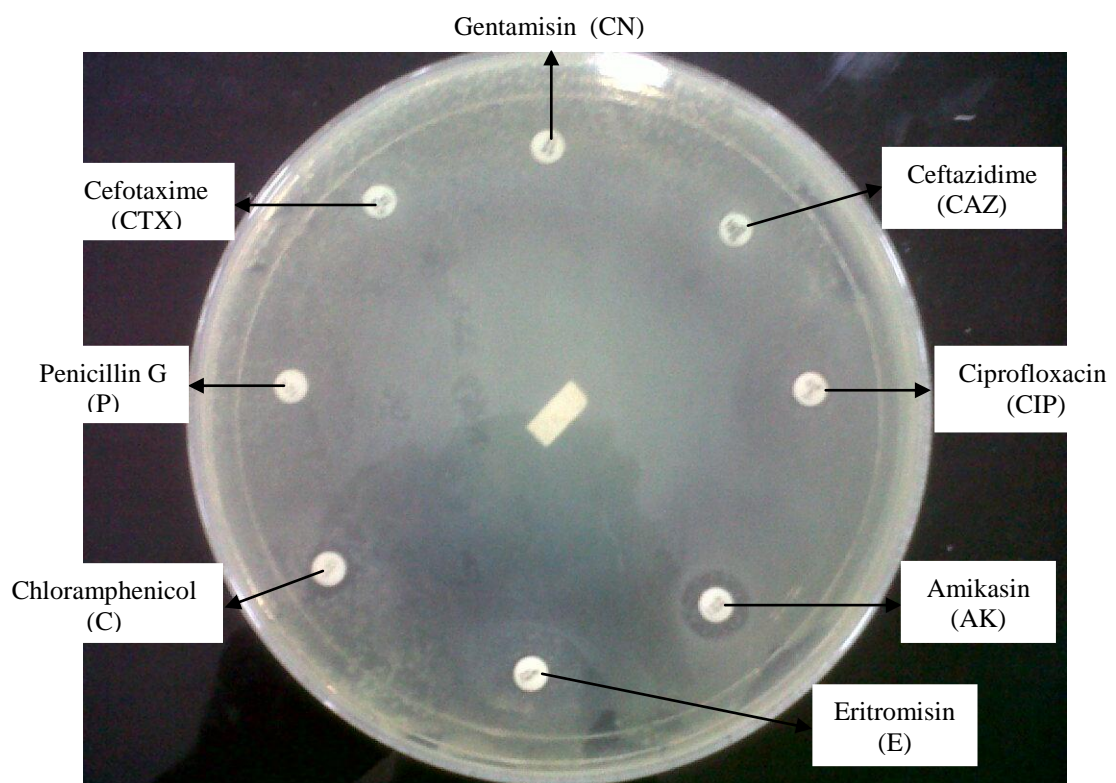
Gambar 42. Hasil Uji Resistensi isolat *Proteus vulgaris* (B1)



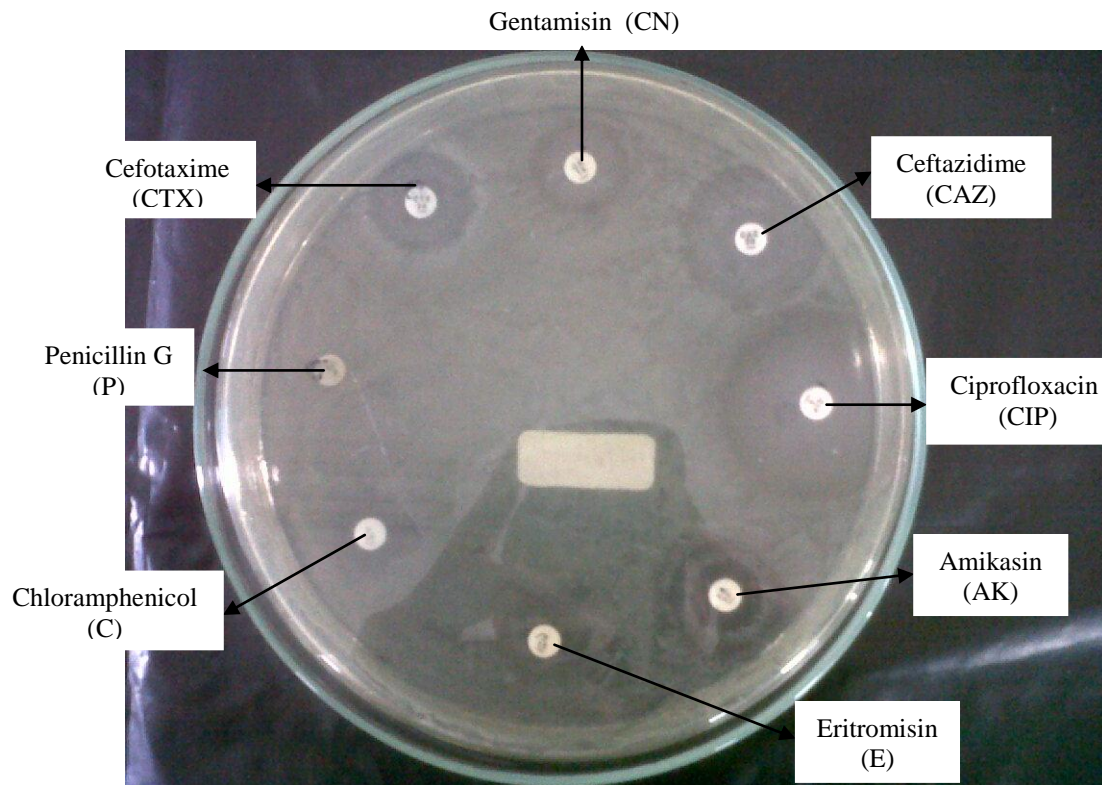
Gambar 43. Hasil Uji Resistensi isolat *Proteus mirabilis* (K5)



Gambar 44. Hasil Uji Resistensi isolat *Alcaligenes sp.* (B8)



Gambar 45. Hasil Uji Resistensi isolat *Pseudomonas sp.* (B24)

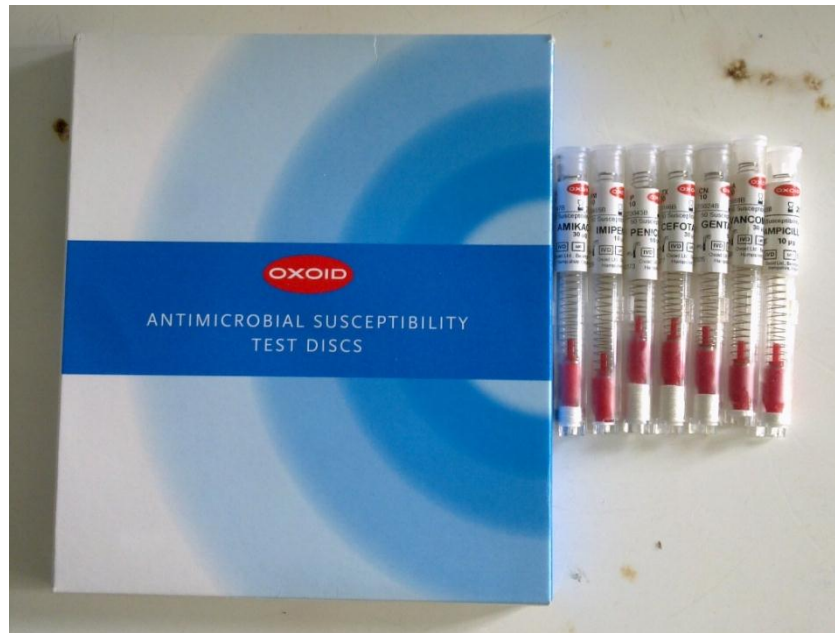


Gambar 46. Hasil Uji Resistensi isolat *Providencia sp.* (K20)

Lampiran III. Peralatan Yang Digunakan Saat Penelitian



Gambar 47. Bunsen dan gelas ukur



Gambar 48. Antibiotik yang di uji sensitivitas.



Gambar 49. Media yang digunakan dalam penelitian.



Gambar 50. Mikropipet, L, dan pinset.