

LAMPIRAN

Lampiran 1. Daftar Sampel

NO	Bank	Kode	Kriteria			Sampel
			1	2	3	
1	Bank Syariah Muamalat Indonesia	BMI	√	√	√	Sampel 1
2	Bank Syariah Mandiri	BSM	√	√	√	Sampel 2
3	Bank Syariah Mega Indonesia	BSMI	√	√	√	Sampel 3
4	Bank Syariah BRI	BRI	√	√	√	Sampel 4
5	Bank panin Syariah	BPS	√	√	√	Sampel 5

Lampiran 2. Data Penelitian

NO	Sampel	Tahun	Murabahah	DPK	EKUITAS	NPF	ROA
1	_BMI	2010-I	4821592	12020256	953564	0.0659	0.0148
2	_BMI	2010-II	5224184	12354924	978810	0.0472	0.0107
3	_BMI	2010-III	5619122	13856508	1666993	0.042	0.0081
4	_BMI	2010-IV	6444227	18574217	1749156	0.0432	0.0136
5	_BMI	2011-I	7523802	18579188	1809511	0.0471	0.0138
6	_BMI	2011-II	8801174	20732974	1872225	0.0432	0.0174
7	_BMI	2011-III	9342019	22493490	1972327	0.0453	0.0155
8	_BMI	2011-IV	10042862	27612924	2067401	0.026	0.0152
9	_BMI	2012-I	10156609	27511865	2118465	0.0283	0.0151
10	_BMI	2012-II	11837798	28229124	2221160	0.0273	0.0161
11	_BMI	2012-III	13244781	30793836	2322463	0.0221	0.0162
12	_BMI	2012-IV	16140184	39422307	2457990	0.0209	0.0154
13	_BPS	2010-I	4944	27821	148745	0	-0.0414
14	_BPS	2010-II	149383	399094	441163	0	-0.0079
15	_BPS	2010-III	33850	187274	144662	0	-0.0331
16	_BPS	2010-IV	40734	309763	143379	0	-0.0253
17	_BPS	2011-I	90142	370192	141598	0	-0.0155
18	_BPS	2011-II	149413	399130	441163	0.0016	-0.0079
19	_BPS	2011-III	245750	251042	445893	0.0038	0.007
20	_BPS	2011-IV	378162	419772	452609	0.0088	0.0175
21	_BPS	2012-I	372429	506215	456832	0.002	0.0235
22	_BPS	2012-II	422642	722565	464661	0.0029	0.0303
23	_BPS	2012-III	669459	898382	473129	0.0019	0.029
24	_BPS	2012-IV	764727	1223290	487666	0.002	0.0329
25	_BRI	2010-I	1990788	3015398	458880	0.0348	0.0112
26	_BRI	2010-II	2626866	3674356	968570	0.0339	0.0097

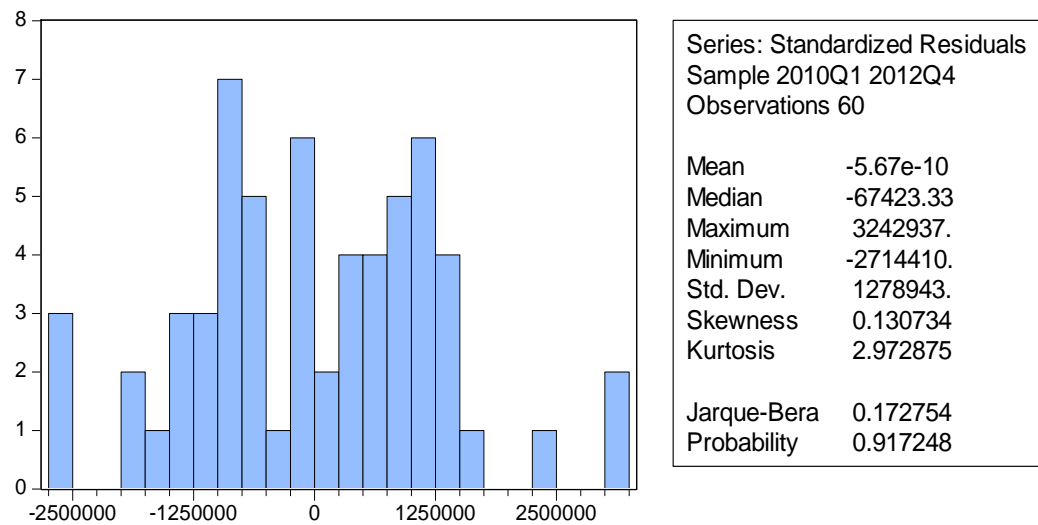
27	_BRI	2010-III	3104920	4861164	955077	0.0337	0.0024
28	_BRI	2010-IV	3350254	5762952	955022	0.0319	0.0035
29	_BRI	2011-I	3534274	5960427	959028	0.0243	0.0023
30	_BRI	2011-II	3806032	6577958	962439	0.034	0.002
31	_BRI	2011-III	4321967	8370114	978338	0.028	0.004
32	_BRI	2011-IV	5275740	9906412	966676	0.0277	0.002
33	_BRI	2012-I	5598307	8899482	971270	0.0331	0.0017
34	_BRI	2012-II	6080404	9410923	1031813	0.0288	0.0121
35	_BRI	2012-III	6400552	10153407	1078271	0.0287	0.0134
36	_BRI	2012-IV	6966407	11948889	1068564	0.03	0.0119
37	_BSM	2010-I	8604253	20885571	1688099	0.0408	0.0204
38	_BSM	2010-II	9822006	23091575	1798589	0.0413	0.0222
39	_BSM	2010-III	10607670	24564246	1919817	0.0417	0.023
40	_BSM	2010-IV	12255138	28681054	2020615	0.0352	0.0221
41	_BSM	2011-I	13603886	31877266	2353379	0.033	0.0222
42	_BSM	2011-II	15673982	33549058	2491375	0.0349	0.0212
43	_BSM	2011-III	17355194	37823467	2629961	0.0321	0.0203
44	_BSM	2011-IV	19231617	42133653	3073264	0.0242	0.0195
45	_BSM	2012-I	20709649	42371223	3266119	0.0252	0.0217
46	_BSM	2012-II	22891202	42727170	3467660	0.0304	0.0225
47	_BSM	2012-III	24658793	43918084	3667376	0.031	0.0222
48	_BSM	2012-IV	26742374	46687969	4180691	0.0282	0.0225
49	_BSMI	2010-I	2935533	3629026	353902	0.0298	0.0318
50	_BSMI	2010-II	9155845	23091575	1798589	0.0301	0.0222
51	_BSMI	2010-III	3051150	3766162	401335	0.0389	0.0247
52	_BSMI	2010-IV	2875311	4040981	381775	0.0352	0.019
53	_BSMI	2011-I	90137	370192	141598	0.0429	-0.0155
54	_BSMI	2011-II	2720300	3848390	421223	0.0384	0.0187
55	_BSMI	2011-III	2954155	4180325	435168	0.0378	0.0165
56	_BSMI	2011-IV	3337997	4928442	435642	0.0303	0.0158
57	_BSMI	2012-I	3528909	5124808	486191	0.0296	0.0352
58	_BSMI	2012-II	3682689	5019289	554973	0.0288	0.0413
59	_BSMI	2012-III	4604449	6531083	623000	0.0286	0.0411
60	_BSMI	2012-IV	5233839	7090422	620514	0.0267	0.0381

Lampiran 3. Data Siap Diolah (NPF dan ROA adalah data t-1)

Sampel	Murabahah	DPK	EKUITAS	NPF	ROA
_BMI	4821592	12020256	953564	0.0473	0.0045
_BMI	5224184	12354924	978810	0.0659	0.0148
_BMI	5619122	13856508	1666993	0.0472	0.0107
_BMI	6444227	18574217	1749156	0.042	0.0081
_BMI	7523802	18579188	1809511	0.0432	0.0136
_BMI	8801174	20732974	1872225	0.0471	0.0138
_BMI	9342019	22493490	1972327	0.0432	0.0174
_BMI	10042862	27612924	2067401	0.0453	0.0155
_BMI	10156609	27511865	2118465	0.026	0.0152
_BMI	11837798	28229124	2221160	0.0283	0.0151
_BMI	13244781	30793836	2322463	0.0273	0.0161
_BMI	16140184	39422307	2457990	0.0221	0.0162
_BPS	4944	27821	148745	0	-0.0138
_BPS	149383	399094	441163	0	-0.0414
_BPS	33850	187274	144662	0	-0.0079
_BPS	40734	309763	143379	0	-0.0331
_BPS	90142	370192	141598	0	-0.0253
_BPS	149413	399130	441163	0	-0.0155
_BPS	245750	251042	445893	0.0016	-0.0079
_BPS	378162	419772	452609	0.0038	0.007
_BPS	372429	506215	456832	0.0088	0.0175
_BPS	422642	722565	464661	0.002	0.0235
_BPS	669459	898382	473129	0.0029	0.0303
_BPS	764727	1223290	487666	0.0019	0.029
_BRI	1990788	3015398	458880	0.032	0.053
_BRI	2626866	3674356	968570	0.0348	0.0112
_BRI	3104920	4861164	955077	0.0339	0.0097
_BRI	3350254	5762952	955022	0.0337	0.0024
_BRI	3534274	5960427	959028	0.0319	0.0035
_BRI	3806032	6577958	962439	0.0243	0.0023
_BRI	4321967	8370114	978338	0.034	0.002
_BRI	5275740	9906412	966676	0.028	0.004
_BRI	5598307	8899482	971270	0.0277	0.002
_BRI	6080404	9410923	1031813	0.0331	0.0017
_BRI	6400552	10153407	1078271	0.0288	0.0121
_BRI	6966407	11948889	1068564	0.0287	0.0134
_BSM	8604253	20885571	1688099	0.0484	0.0223

_BSM	9822006	23091575	1798589	0.0408	0.0204
_BSM	10607670	24564246	1919817	0.0413	0.0222
_BSM	12255138	28681054	2020615	0.0417	0.023
_BSM	13603886	31877266	2353379	0.0352	0.0221
_BSM	15673982	33549058	2491375	0.033	0.0222
_BSM	17355194	37823467	2629961	0.0349	0.0212
_BSM	19231617	42133653	3073264	0.0321	0.0203
_BSM	20709649	42371223	3266119	0.0242	0.0195
_BSM	22891202	42727170	3467660	0.0252	0.0217
_BSM	24658793	43918084	3667376	0.0304	0.0225
_BSM	26742374	46687969	4180691	0.031	0.0222
_BSMI	2935533	3629026	353902	0.0208	0.0222
_BSMI	9155845	23091575	1798589	0.0298	0.0318
_BSMI	3051150	3766162	401335	0.0301	0.0222
_BSMI	2875311	4040981	381775	0.0389	0.0247
_BSMI	90137	370192	141598	0.0352	0.019
_BSMI	2720300	3848390	421223	0.0429	-0.0155
_BSMI	2954155	4180325	435168	0.0384	0.0187
_BSMI	3337997	4928442	435642	0.0378	0.0165
_BSMI	3528909	5124808	486191	0.0303	0.0158
_BSMI	3682689	5019289	554973	0.0296	0.0352
_BSMI	4604449	6531083	623000	0.0288	0.0413
_BSMI	5233839	7090422	620514	0.0286	0.0411

Lampiran 4. Uji Normalitas



Lampiran 5. Hasil Analisis Deskriptif

	MURABAHAH?	DPK?	EKUITAS?	NPF?	ROA?
Mean	6865043.	14272811	1283273.	0.027425	0.013432
Median	5022888.	8634798.	967623.0	0.029900	0.015950
Maximum	26742374	46687969	4180691.	0.065900	0.041300
Minimum	4944.000	27821.00	141598.0	0.000000	-0.041400
Std. Dev.	6619185.	14085360	996829.6	0.014823	0.016115
Skewness	1.251087	0.846419	0.955263	-0.508543	-1.226329
Kurtosis	3.966959	2.436034	3.163453	2.973707	5.155801
Jarque-Bera	17.98970	7.959395	9.192065	2.587893	26.65751
Probability	0.000124	0.018691	0.010092	0.274187	0.000002
Sum	4.12E+08	8.56E+08	76996368	1.645500	0.805900
Sum Sq. Dev.	2.59E+15	1.17E+16	5.86E+13	0.012963	0.015322
Observations	60	60	60	60	60
Cross sections	5	5	5	5	5

Lampiran 6. Hasil Rata-rata Masing-masing Perbankan

Sampel	Murabahah	DPK	EKUITAS	NPF	ROA
_BMI	4821592	12020256	953564	0.0659	0.0148
_BMI	5224184	12354924	978810	0.0472	0.0107
_BMI	5619122	13856508	1666993	0.042	0.0081
_BMI	6444227	18574217	1749156	0.0432	0.0136
_BMI	7523802	18579188	1809511	0.0471	0.0138
_BMI	8801174	20732974	1872225	0.0432	0.0174
_BMI	9342019	22493490	1972327	0.0453	0.0155
_BMI	10042862	27612924	2067401	0.026	0.0152
_BMI	10156609	27511865	2118465	0.0283	0.0151
_BMI	11837798	28229124	2221160	0.0273	0.0161
_BMI	13244781	30793836	2322463	0.0221	0.0162
_BMI	16140184	39422307	2457990	0.0209	0.0154
Mean	9099862.833	22681801.08	1849172.08	0.038208333	0.014325
_BPS	4944	27821	148745	0	-0.0414
_BPS	149383	399094	441163	0	-0.0079
_BPS	33850	187274	144662	0	-0.0331
_BPS	40734	309763	143379	0	-0.0253
_BPS	90142	370192	141598	0	-0.0155
_BPS	149413	399130	441163	0.0016	-0.0079
_BPS	245750	251042	445893	0.0038	0.007
_BPS	378162	419772	452609	0.0088	0.0175
_BPS	372429	506215	456832	0.002	0.0235
_BPS	422642	722565	464661	0.0029	0.0303
_BPS	669459	898382	473129	0.0019	0.029
_BPS	764727	1223290	487666	0.002	0.0329
Mean	276802.9167	476211.6667	353458.333	0.001916667	0.000758333
_BRI	1990788	3015398	458880	0.0348	0.0112
_BRI	2626866	3674356	968570	0.0339	0.0097
_BRI	3104920	4861164	955077	0.0337	0.0024
_BRI	3350254	5762952	955022	0.0319	0.0035
_BRI	3534274	5960427	959028	0.0243	0.0023
_BRI	3806032	6577958	962439	0.034	0.002
_BRI	4321967	8370114	978338	0.028	0.004
_BRI	5275740	9906412	966676	0.0277	0.002
_BRI	5598307	8899482	971270	0.0331	0.0017
_BRI	6080404	9410923	1031813	0.0288	0.0121
_BRI	6400552	10153407	1078271	0.0287	0.0134

_BRI	6966407	11948889	1068564	0.03	0.0119
Mean	4421375.917	7378456.833	946162.333	0.030741667	0.00635
_BSM	8604253	20885571	1688099	0.0408	0.0204
_BSM	9822006	23091575	1798589	0.0413	0.0222
_BSM	10607670	24564246	1919817	0.0417	0.023
_BSM	12255138	28681054	2020615	0.0352	0.0221
_BSM	13603886	31877266	2353379	0.033	0.0222
_BSM	15673982	33549058	2491375	0.0349	0.0212
_BSM	17355194	37823467	2629961	0.0321	0.0203
_BSM	19231617	42133653	3073264	0.0242	0.0195
_BSM	20709649	42371223	3266119	0.0252	0.0217
_BSM	22891202	42727170	3467660	0.0304	0.0225
_BSM	24658793	43918084	3667376	0.031	0.0222
Mean	15946671.82	33783851.55	2579659.45	0.033618182	0.021572727
_BSM	26742374	46687969	4180691	0.0282	0.0225
_BSMI	2935533	3629026	353902	0.0298	0.0318
_BSMI	9155845	23091575	1798589	0.0301	0.0222
_BSMI	3051150	3766162	401335	0.0389	0.0247
_BSMI	2875311	4040981	381775	0.0352	0.019
_BSMI	90137	370192	141598	0.0429	-0.0155
_BSMI	2720300	3848390	421223	0.0384	0.0187
_BSMI	2954155	4180325	435168	0.0378	0.0165
_BSMI	3337997	4928442	435642	0.0303	0.0158
_BSMI	3528909	5124808	486191	0.0296	0.0352
_BSMI	3682689	5019289	554973	0.0288	0.0413
_BSMI	4604449	6531083	623000	0.0286	0.0411
_BSMI	5233839	7090422	620514	0.0267	0.0381
Mean	5454822.154	9100666.462	833430.846	0.032715385	0.023953846

Lampiran 7. Pool (Pooled Least Squares)

Dependent Variable: MURABAHAH?

Method: Pooled Least Squares

Date: 12/04/13 Time: 22:18

Sample: 2010Q1 2012Q4

Included observations: 12

Cross-sections included: 5

Total pool (balanced) observations: 60

Variable	Coefficient	Std. Error	t-Statistic	Prob.
C	-312670.0	442613.4	-0.706418	0.4829
DPK?	0.260109	0.059464	4.374252	0.0001
EKUITAS?	2.861592	0.830651	3.445001	0.0011
NPF?	-16142224	12704258	-1.270615	0.2092
ROA?	19139584	11315120	1.691505	0.0964
R-squared	0.963196	Mean dependent var		6865043.
Adjusted R-squared	0.960519	S.D. dependent var		6619185.
S.E. of regression	1315213.	Akaike info criterion		31.09655
Sum squared resid	9.51E+13	Schwarz criterion		31.27108
Log likelihood	-927.8965	Hannan-Quinn criter.		31.16482
F-statistic	359.8520	Durbin-Watson stat		0.461471
Prob(F-statistic)	0.000000			

Lampiran 8. Pool (Fixed Effect)

Dependent Variable: MURABAHAH?

Method: Pooled Least Squares

Date: 12/04/13 Time: 22:14

Sample: 2010Q1 2012Q4

Included observations: 12

Cross-sections included: 5

Total pool (balanced) observations: 60

Variable	Coefficient	Std. Error	t-Statistic	Prob.
C	-1125715.	1041441.	-1.080920	0.2848
DPK?	0.272581	0.057802	4.715743	0.0000
EKUITAS?	3.362194	0.678381	4.956200	0.0000
NPF?	-6617652.	25026547	-0.264425	0.7925
ROA?	-2201247.	8882061.	-0.247831	0.8053
Fixed Effects (Cross)				
_BMI--C	-1877379.			
_BPS--C	88999.67			
_BRI--C	580741.6			
_BSM--C	-373569.9			
_BSMI--C	1581208.			

Effects Specification

Cross-section fixed (dummy variables)

R-squared	0.982304	Mean dependent var	6865043.
Adjusted R-squared	0.979528	S.D. dependent var	6619185.
S.E. of regression	947075.4	Akaike info criterion	30.49763
Sum squared resid	4.57E+13	Schwarz criterion	30.81178
Log likelihood	-905.9288	Hannan-Quinn criter.	30.62051
F-statistic	353.8733	Durbin-Watson stat	1.249319
Prob(F-statistic)	0.000000		

Lampiran 9. Pool (Random Effect)

Dependent Variable: MURABAHAH?

Method: Pooled EGLS (Cross-section random effects)

Date: 12/04/13 Time: 22:14

Sample: 2010Q1 2012Q4

Included observations: 12

Cross-sections included: 5

Total pool (balanced) observations: 60

Swamy and Arora estimator of component variances

Variable	Coefficient	Std. Error	t-Statistic	Prob.
C	-312670.0	318722.8	-0.981009	0.3309
DPK?	0.260109	0.042819	6.074565	0.0000
EKUITAS?	2.861592	0.598146	4.784105	0.0000
NPF?	-16142224	9148247.	-1.764516	0.0832
ROA?	19139584	8147939.	2.349009	0.0224
Random Effects (Cross)				
_BMI--C	-1.33E-06			
_BPS--C	-4.39E-07			
_BRI--C	4.02E-07			
_BSM--C	4.57E-07			
_BSMI--C	9.06E-07			
Effects Specification				
			S.D.	Rho
Cross-section random			0.267751	0.0000
Idiosyncratic random			947075.4	1.0000
Weighted Statistics				
R-squared	0.963196	Mean dependent var		6865043.
Adjusted R-squared	0.960519	S.D. dependent var		6619185.
S.E. of regression	1315213.	Sum squared resid		9.51E+13
F-statistic	359.8520	Durbin-Watson stat		0.461471
Prob(F-statistic)	0.000000			
Unweighted Statistics				
R-squared	0.963196	Mean dependent var		6865043.
Sum squared resid	9.51E+13	Durbin-Watson stat		0.461471

Lampiran 10. Chow-Test atau Likelihood Ratio Test (Pool vs Fixed Effect)

Redundant Fixed Effects Tests

Pool: ESTIUTA

Test cross-section fixed effects

Effects Test	Statistic	d.f.	Prob.
Cross-section F	13.767068	(4,51)	0.0000
Cross-section Chi-square	43.935440	4	0.0000

Cross-section fixed effects test equation:

Dependent Variable: MURABAHAH?

Method: Panel Least Squares

Date: 12/04/13 Time: 22:15

Sample: 2010Q1 2012Q4

Included observations: 12

Cross-sections included: 5

Total pool (balanced) observations: 60

Variable	Coefficient	Std. Error	t-Statistic	Prob.
C	-312670.0	442613.4	-0.706418	0.4829
DPK?	0.260109	0.059464	4.374252	0.0001
EKUITAS?	2.861592	0.830651	3.445001	0.0011
NPF?	-16142224	12704258	-1.270615	0.2092
ROA?	19139584	11315120	1.691505	0.0964
R-squared	0.963196	Mean dependent var		6865043.
Adjusted R-squared	0.960519	S.D. dependent var		6619185.
S.E. of regression	1315213.	Akaike info criterion		31.09655
Sum squared resid	9.51E+13	Schwarz criterion		31.27108
Log likelihood	-927.8965	Hannan-Quinn criter.		31.16482
F-statistic	359.8520	Durbin-Watson stat		0.461471
Prob(F-statistic)	0.000000			

Lampiran 11. Uji Hausman Test (Fixed Effect vs Random Effect)

Correlated Random Effects - Hausman Test

Pool: ESTIUTA

Test cross-section random effects

Test Summary	Chi-Sq. Statistic	Chi-Sq. d.f.	Prob.
Cross-section random	55.068273	4	0.0000

Cross-section random effects test comparisons:

Variable	Fixed	Random	Var(Diff.)	Prob.
DPK?	0.272581	0.260109	0.001508	0.7480
EKUITAS?	3.362194	2.861592	0.102423	0.1178
NPF?	-6617651.882167	-16142224.198837	542637639769953.01	0.6826
ROA?	-2201247.406742	19139583.593407	12502106627372.719	0.0000

Cross-section random effects test equation:

Dependent Variable: MURABAHAH?

Method: Panel Least Squares

Date: 12/04/13 Time: 22:15

Sample: 2010Q1 2012Q4

Included observations: 12

Cross-sections included: 5

Total pool (balanced) observations: 60

Variable	Coefficient	Std. Error	t-Statistic	Prob.
C	-1125715.	1041441.	-1.080920	0.2848
DPK?	0.272581	0.057802	4.715743	0.0000
EKUITAS?	3.362194	0.678381	4.956200	0.0000
NPF?	-6617652.	25026547	-0.264425	0.7925
ROA?	-2201247.	8882061.	-0.247831	0.8053

Effects Specification

Cross-section fixed (dummy variables)

R-squared	0.982304	Mean dependent var	6865043.
Adjusted R-squared	0.979528	S.D. dependent var	6619185.
S.E. of regression	947075.4	Akaike info criterion	30.49763
Sum squared resid	4.57E+13	Schwarz criterion	30.81178
Log likelihood	-905.9288	Hannan-Quinn criter.	30.62051
F-statistic	353.8733	Durbin-Watson stat	1.249319
Prob(F-statistic)	0.000000		

Lampiran 12. Tabel T

df	Sig: 0.05	Sig: 0,025	df	Sig: 0.05	Sig: 0,025
1	6.314	12.706	46	1.679	2.013
2	2.920	4.303	47	1.678	2.012
3	2.353	3.182	48	1.677	2.011
4	2.132	2.776	49	1.677	2.010
5	2.015	2.571	50	1.676	2.009
6	1.943	2.447	51	1.675	2.008
7	1.895	2.365	52	1.675	2.007
8	1.860	2.306	53	1.674	2.006
9	1.833	2.262	54	1.674	2.005
10	1.812	2.228	55	1.673	2.004
11	1.796	2.201	56	1.673	2.003
12	1.782	2.179	57	1.672	2.002
13	1.771	2.160	58	1.672	2.002
14	1.761	2.145	59	1.671	2.001
15	1.753	2.131	60	1.671	2.000
16	1.746	2.120	61	1.670	2.000
17	1.740	2.110	62	1.670	1.999
18	1.734	2.101	63	1.669	1.998
19	1.729	2.093	64	1.669	1.998
20	1.725	2.086	65	1.669	1.997
21	1.721	2.080	66	1.668	1.997
22	1.717	2.074	67	1.668	1.996
23	1.714	2.069	68	1.668	1.995
24	1.711	2.064	69	1.667	1.995
25	1.708	2.060	70	1.667	1.994
26	1.706	2.056	71	1.667	1.994
27	1.703	2.052	72	1.666	1.993
28	1.701	2.048	73	1.666	1.993
29	1.699	2.045	74	1.666	1.993
30	1.697	2.042	75	1.665	1.992
31	1.696	2.040	76	1.665	1.992
32	1.694	2.037	77	1.665	1.991
33	1.692	2.035	78	1.665	1.991
34	1.691	2.032	79	1.664	1.990
35	1.690	2.030	80	1.664	1.990
36	1.688	2.028	81	1.664	1.990
37	1.687	2.026	82	1.664	1.989
38	1.686	2.024	83	1.663	1.989

39	1.685	2.023	84	1.663	1.989
40	1.684	2.021	85	1.663	1.988
41	1.683	2.020	86	1.663	1.988
42	1.682	2.018	87	1.663	1.988
43	1.681	2.017	88	1.662	1.987
44	1.680	2.015	89	1.662	1.987
45	1.679	2.014	90	1.662	1.987

Lampiran. 13. Tabel F
(Taraf Signifikansi : 005)

Df2	Df1						
	1	2	3	4	5	6	7
1	161.448	199.500	215.707	224.583	161.448	233.986	236.768
2	18.513	19.000	19.164	19.247	18.513	19.330	19.353
3	10.128	9.552	9.277	9.117	10.128	8.941	8.887
4	7.709	6.944	6.591	6.388	7.709	6.163	6.094
5	6.608	5.786	5.409	5.192	6.608	4.950	4.876
6	5.987	5.143	4.757	4.534	5.987	4.284	4.207
7	5.591	4.737	4.347	4.120	5.591	3.866	3.787
8	5.318	4.459	4.066	3.838	5.318	3.581	3.500
9	5.117	4.256	3.863	3.633	5.117	3.374	3.293
10	4.965	4.103	3.708	3.478	4.965	3.217	3.135
11	4.844	3.982	3.587	3.357	4.844	3.095	3.012
12	4.747	3.885	3.490	3.259	4.747	2.996	2.913
13	4.667	3.806	3.411	3.179	4.667	2.915	2.832
14	4.600	3.739	3.344	3.112	4.600	2.848	2.764
15	4.543	3.682	3.287	3.056	4.543	2.790	2.707
16	4.494	3.634	3.239	3.007	4.494	2.741	2.657
17	4.451	3.592	3.197	2.965	4.451	2.699	2.614
18	4.414	3.555	3.160	2.928	4.414	2.661	2.577
19	4.381	3.522	3.127	2.895	4.381	2.628	2.544
20	4.351	3.493	3.098	2.866	4.351	2.599	2.514
21	4.325	3.467	3.072	2.840	4.325	2.573	2.488
22	4.301	3.443	3.049	2.817	4.301	2.549	2.464
23	4.279	3.422	3.028	2.796	4.279	2.528	2.442
24	4.260	3.403	3.009	2.776	4.260	2.508	2.423
25	4.242	3.385	2.991	2.759	4.242	2.490	2.405
26	4.225	3.369	2.975	2.743	4.225	2.474	2.388
27	4.210	3.354	2.960	2.728	4.210	2.459	2.373
28	4.196	3.340	2.947	2.714	4.196	2.445	2.359
29	4.183	3.328	2.934	2.701	4.183	2.432	2.346
30	4.171	3.316	2.922	2.690	4.171	2.421	2.334
31	4.160	3.305	2.911	2.679	4.160	2.409	2.323
32	4.149	3.295	2.901	2.668	4.149	2.399	2.313

33	4.139	3.285	2.892	2.659	4.139	2.389	2.303
34	4.130	3.276	2.883	2.650	4.130	2.380	2.294
35	4.121	3.267	2.874	2.641	4.121	2.372	2.285
36	4.113	3.259	2.866	2.634	4.113	2.364	2.277
37	4.105	3.252	2.859	2.626	4.105	2.356	2.270
38	4.098	3.245	2.852	2.619	4.098	2.349	2.262
39	4.091	3.238	2.845	2.612	4.091	2.342	2.255
40	4.085	3.232	2.839	2.606	4.085	2.336	2.249
41	4.079	3.226	2.833	2.600	4.079	2.330	2.243
42	4.073	3.220	2.827	2.594	4.073	2.324	2.237
43	4.067	3.214	2.822	2.589	4.067	2.319	2.232
44	4.062	3.209	2.816	2.584	4.062	2.313	2.226
45	4.057	3.204	2.812	2.579	4.057	2.308	2.221
46	4.052	3.200	2.807	2.574	4.052	2.304	2.216
47	4.047	3.195	2.802	2.570	4.047	2.299	2.212
48	4.043	3.191	2.798	2.565	4.043	2.295	2.207
49	4.038	3.187	2.794	2.561	4.038	2.290	2.203
50	4.034	3.183	2.790	2.557	4.034	2.286	2.199
51	4.030	3.179	2.786	2.553	4.030	2.283	2.195
52	4.027	3.175	2.783	2.550	4.027	2.279	2.192
53	4.023	3.172	2.779	2.546	4.023	2.275	2.188
54	4.020	3.168	2.776	2.543	4.020	2.272	2.185
55	4.016	3.165	2.773	2.540	4.016	2.269	2.181
56	4.013	3.162	2.769	2.537	4.013	2.266	2.178
57	4.010	3.159	2.766	2.534	4.010	2.263	2.175
58	4.007	3.156	2.764	2.531	4.007	2.260	2.172
59	4.004	3.153	2.761	2.528	4.004	2.257	2.169
60	4.001	3.150	2.758	2.525	4.001	2.254	2.167
61	3.998	3.148	2.755	2.523	3.998	2.251	2.164
62	3.996	3.145	2.753	2.520	3.996	2.249	2.161
63	3.993	3.143	2.751	2.518	3.993	2.246	2.159
64	3.991	3.140	2.748	2.515	3.991	2.244	2.156
65	3.989	3.138	2.746	2.513	3.989	2.242	2.154
66	3.986	3.136	2.744	2.511	3.986	2.239	2.152
67	3.984	3.134	2.742	2.509	3.984	2.237	2.150
68	3.982	3.132	2.740	2.507	3.982	2.235	2.148
69	3.980	3.130	2.737	2.505	3.980	2.233	2.145
70	3.978	3.128	2.736	2.503	3.978	2.231	2.143

71	3.976	3.126	2.734	2.501	3.976	2.229	2.142
72	3.974	3.124	2.732	2.499	3.974	2.227	2.140
73	3.972	3.122	2.730	2.497	3.972	2.226	2.138
74	3.970	3.120	2.728	2.495	3.970	2.224	2.136
75	3.968	3.119	2.727	2.494	3.968	2.222	2.134
76	3.967	3.117	2.725	2.492	3.967	2.220	2.133
77	3.965	3.115	2.723	2.490	3.965	2.219	2.131
78	3.963	3.114	2.722	2.489	3.963	2.217	2.129
79	3.962	3.112	2.720	2.487	3.962	2.216	2.128
80	3.960	3.111	2.719	2.486	3.960	2.214	2.126
81	3.959	3.109	2.717	2.484	3.959	2.213	2.125
82	3.957	3.108	2.716	2.483	3.957	2.211	2.123
83	3.956	3.107	2.715	2.482	3.956	2.210	2.122
84	3.955	3.105	2.713	2.480	3.955	2.209	2.121
85	3.953	3.104	2.712	2.479	3.953	2.207	2.119
86	3.952	3.103	2.711	2.478	3.952	2.206	2.118
87	3.951	3.101	2.709	2.476	3.951	2.205	2.117
88	3.949	3.100	2.708	2.475	3.949	2.203	2.115
89	3.948	3.099	2.707	2.474	3.948	2.202	2.114
90	3.947	3.098	2.706	2.473	3.947	2.201	2.113