

# LAMPIRAN

## Lampiran1. Hasil Pengolahan Data

Dependent Variable: LOG(PDBR)

Method: Least Squares

Date: 10/17/14 Time: 11:16

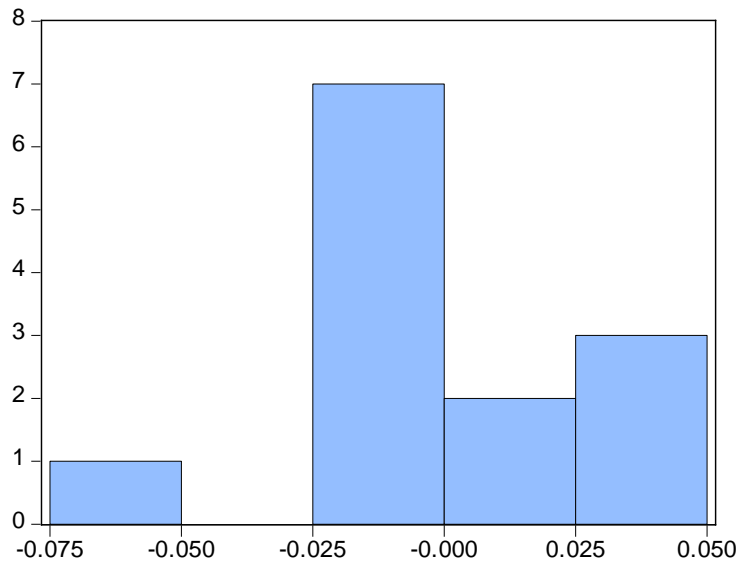
Sample: 2001 2013

Included observations: 13

Variable	Coefficient	Std. Error	t-Statistic	Prob.
C	4.161026	0.084069	49.49512	0.0000
LOG(RF)	0.082025	0.029752	2.756921	0.0202
LOG(PP)	1.022684	0.027656	36.97872	0.0000
R-squared	0.998831	Mean dependent var		7.124593
Adjusted R-squared	0.998597	S.D. dependent var		0.802119
S.E. of regression	0.030048	Akaike info criterion		-3.972884
Sum squared resid	0.009029	Schwarz criterion		-3.842511
Log likelihood	28.82375	F-statistic		4270.681
Durbin-Watson stat	1.169779	Prob(F-statistic)		0.000000

## Lampiran 2.Uji Normalitas

### Hasil Uji Normalitas



Series: Residuals	
Sample 2001 2013	
Observations 13	
Mean	-1.78e-15
Median	-0.001373
Maximum	0.030500
Minimum	-0.052279
Std. Dev.	0.023758
Skewness	-0.565748
Kurtosis	2.792154
Jarque-Bera	0.716887
Probability	0.698763

### Lampiran 3. Uji Multikolinieritas

#### Hasil Uji Multikolinieritas

##### a. Variabel Produktivitas Tenaga Kerja

Scalar VIF\_EQLOGPP = 5.47743881168

##### b. Variabel Ruang Fiskal

Scalar VIF\_EQLOGRF = 5.47743881168

## Lampiran 4. Uji Heteroskedastisitas

### Hasil Uji Heterokedastisitas

Heteroskedasticity Test: White

F-statistic	0.855247	Prob. F(2,10)	0.4541
Obs*R-squared	1.898845	Prob. Chi-Square(2)	0.3870
Scaled explained SS	1.006811	Prob. Chi-Square(2)	0.6045

## Lampiran 5. Uji Autokorelasi

### Hasil Uji Autokorelasi

Breusch-Godfrey Serial Correlation LM Test:

---

---

F-statistic	1.065644	Prob. F(2,8)	0.3888
Obs*R-squared	2.734771	Prob. Chi-Square(2)	0.2548

---

---

### Lampiran Data Model

tahun	PDBR	RF	PP
2001	411.75	57.206	4.53419227
2002	429.19	56.826	4.682924168
2003	433.51	99.271	4.670940631
2004	500.89	90.814	5.344536918
2005	642.33	120.906	6.76492891
2006	1,847.13	180.212	19.35180723
2007	1,964.33	184.186	19.66296296
2008	2,082.46	216.8	20.30677718
2009	2,177.74	269.19	20.76609135
2010	2,310.69	268.2	21.35375658
2011	2,464.70	319.3	22.47378499
2012	2,618.90	366	23.63414854
2013	2,770.30	503.2	25.00270758

### Ruang Fiskal Pemerintah Periode 2001-2013

Tahun	TB	BP	PPBH	S	TD	RF
2001	341,56	38,7	87,1	77,5	81,054	57.206
2002	322,179	39,479	87,67	40	98,204	56.826
2003	376,505	47,67	65,35	43,9	120,314	99.271
2004	427,186	52,743	62,4	91,529	129,7	90.814
2005	511,619	54,25	65,2	120,8	150,463	120.906
2006	666,212	73,3	79,1	107,4	226,2	180.212
2007	757,886	90,4	79,8	150,2	253,3	184.186
2008	985,7	112,8	88,4	275,3	292,4	216.8
2009	937,39	127,7	93,8	138,1	308,6	269.19
2010	1042,1	148,1	88,4	192,7	344,7	268.2
2011	1295	175,7	93,3	295,4	411,3	319.3
2012	1491,4	197,9	100,5	346,4	480,6	366
2013	1726,2	233	112,5	348,1	529,4	503.2

**Keterangan:**

TB : Total Belanja

BP : Belanja Pegawai

PPBH : Pembayaran Pokok Bunga dan Hutang

S : Subsidi

TD : Transfer Daerah

RF : Ruang Fiskal